

HCFCD Update To Houston Stronger



Date: June 14, 2019

Presenter: Alan R. Black, P.E.
Director of Operations

Bond Program Update

- Status Tracker is live: <http://www.harriscountyfemt.org/cb>
- Construction
 - \$126M awarded since 8/25/2018 (30 projects)
 - \$252M in additional construction awards/advertisements for 2019
 - \$283M in active construction contracts (62% complete)
- Overall - Total \$2.2 Billion in projects underway
 - 146 bond projects Initiated since 8/28/2018 (61% of the portfolio)
 - \$204M in authorized funds
 - 105 Neighborhood Drainage Improvement Projects (HCED) underway

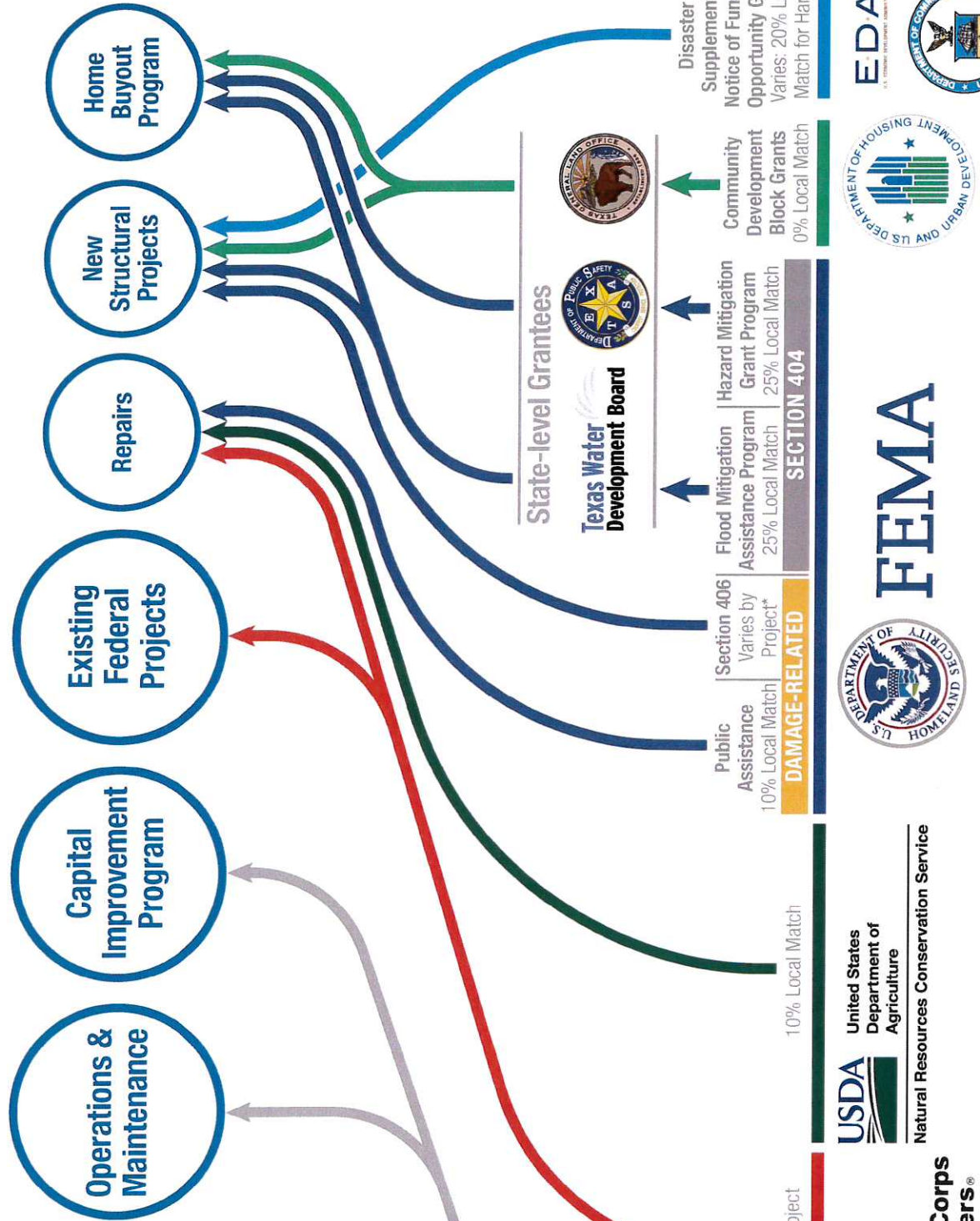
Federal Funding Pursuits

- Reimbursements
 - \$8.3M total reimbursements from FEMA
 - \$247k from the State (local share)
- Total Grants APPROVED
 - USACE \$483M (\$336M / \$147M)
 - All Other \$326M (\$255M / \$71M)
 - Total \$809M (\$336M / \$147M)
- Repairs
 - \$86M NRCS grants
 - \$59M expected from FEMA
 - \$2M expected from USACE
- USACE
 - PPA's for all four Federal Projects complete
 - \$6M BBTRS *with no local funds*
- Buyouts (as of May 2019)
 - <https://www.hcfcd.org/hurricane-harvey/home-buyout-program/>
 - 322 purchased, 450 in process
 - CDBG-DR 1st Tranche (\$200M) pending contract
- EDA - Tunnel Feasibility grant (\$400k) – project underway
- New Projects
 - FEMA 404 (HMGP) - \$180M in applications
 - FEMA 406 (PA) - \$60M in applications
 - CDBG-DR (HUD) – 2nd Tranche (\$1B?)

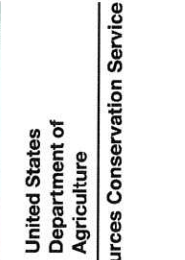
Call Alan Black at (713) 684-4260 with any questions regarding these notes

How is HARRIS COUNTY FLOOD CONTROL DISTRICT

funded for disaster
recovery & resiliency?



Includes Local Match for Federally Funded Projects



Public Assistance
10% Local Match
DAMAGE-RELATED

Section 406
Varies by Project*
Flood Mitigation Assistance Program
25% Local Match
Hazard Mitigation Grant Program
25% Local Match

State-level Grantees
Texas Water Development Board



Community Development Block Grants
0% Local Match



Disaster Supplemental Notice of Funding Opportunity Grant
Varies; 20% Local Match for Harvey



*10% Local Match for Hurricane Harvey